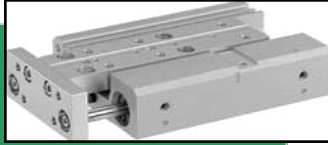




**HYDRAULIC
CONTROLS**
INC.



Pneumatic Quick Reference Guide

DENVER
(303) 295-7500

EMERYVILLE
(510) 658-8300

FRESNO
(559) 268-4291

REDDING
(530) 221-6500

SAN DIEGO
(619) 691-0215

STOCKTON
(209) 466-1531

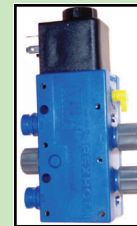
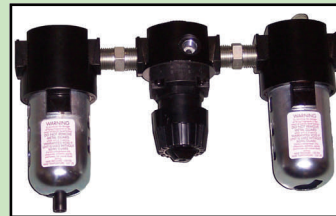
TULARE
(559) 688-2911

WALNUT
(909) 869-7600

YUBA CITY
(530) 674-0900



FRL Units



Valves



www.hydraulic-controls.com



Tube, Fittings & Accessories





Stocking Centers

Denver (303) 295-7500 Fresno (559) 268-4291

Emeryville (510) 658-8300

Tulare (559) 688-2911

Redding (530) 221-6500

San Diego (619) 691-0215

Stockton (209) 466-1531

Walnut (909) 869-7600

Yuba City (530) 674-0900

Pneumatics

Commonly Stocked Products

FRL Units, Bosch Rexroth AS2, AS3, Heavy Duty.....	3-5
Automation Ideas	6
Valves, Solenoid 840, 740, TC08, TC15, Ceram.....	7-11
Vacuum Ideas	12
Valves, Push/ Pull Clippard	13
Valves, Lever Clippard.....	13
Hopper Dump Valve, Bosch.....	14
Quick Exhaust Valves, Bosch	14
Fittings, Bosch & SPC	15-18
Blow Guns, Coilhose	19
Air Tool Lubricant, ISO 46.....	19
Universal Quick Couplers	19
Tubing, Assemblies, Coilhose	19
Tube Parts, Coilhose	20
Tubing, Polyethylene & Nylon, Coilhose.....	21
Mufflers & Breathers	22



Piggyback
FRL



Combo
FRL

1/4" 3/8" & 1/2" Piggyback and Combo Units (FRL) AS2/AS3

Description	Ports NPTF	Nominal Flow qn (SCFM)	Supply PSI	Secondary PSI	Poly Gauge	Assembly Part Number
Piggyback FR&L	1/4"	64 SCFM	7-232 PSI	116	✓	R432000692
Piggyback FR&L	3/8"	71 SCFM	7-232 PSI	116	✓	R432000698
Piggyback FR&L	1/2"	123 SCFM	7-232 PSI	116	✓	R432002008
Combo FRL	1/4"	49 SCFM	7-232 PSI	116	✓	R432000704
Combo FRL	3/8"	56 SCFM	7-232 PSI	116	✓	R432000710
Combo FRL	1/2"	123 SCFM	7-232 PSI	116	✓	R432002014

Note: Individual components for above assemblies listed below.

Material List for above Assemblies AS2/AS3

Ports NPTF	Filter	Piggyback Filter/Reg	Regulator	Lubricator	Assembly Section Kit	Poly Gauge	Assembled Part Number
1/4"		R432000638		R432000650	R412007371 (x1)	R412004417	R432000692
1/4"	R432000500		R432000571	R432000650	R412007371 (x2)	R412004417	R432000704
3/8"		R432000644		R432000654	R412007371 (x1)	R412004417	R432000698
3/8"	R432000506		R432000583	R432000654	R412007371 (x2)	R412004417	R432000710
1/2"		R432001991		R432002002	R412007371 (x1)	R412004417	R432002008
1/2"	R432001906		R432001955	R432002002	R412007371 (x2)	R412004417	R432002014

Tech Tip
Lubricators use air tool lubricant. See pg. 21



¹Filter



²Piggyback



³Regulator



⁴Lubricator



Section Kit



Gauge

1/4" 3/8" & 1/2" Individual Component Specifications AS2/AS3

Description	Ports NPTF	Nominal Flow qn (SCFM)	Supply PSI	Secondary PSI	Poly Gauge	Part Number
¹ Filter	1/4"	78 SCFM	7-232 PSI		No	R432000500
¹ Filter	3/8"	85 SCFM	7-232 PSI		No	R432000506
¹ Filter	1/2"	123 SCFM	7-232 PSI		No	R432001906
² Filter & Regulator	1/4"	71 SCFM	7-232 PSI	116	✓	R432000638
² Filter & Regulator	3/8"	92 SCFM	7-232 PSI	116	✓	R432000644
² Filter & Regulator	1/2"	183 SCFM	7-232 PSI	116	✓	R432001991
³ Regulator	1/4"	78 SCFM	7-232 PSI	7-232 PSI	✓	R432000571
³ Regulator	3/8"	95 SCFM	7-232 PSI	7-232 PSI	✓	R432000583
³ Regulator	1/2"	141 SCFM	7-232 PSI	7-232 PSI	✓	R432001955
⁴ Lubricator	1/4"	99 SCFM	7-232 PSI	Fill Port G 1/8	No	R432000650
⁴ Lubricator	3/8"	109 SCFM	7-232 PSI	Fill Port G 1/8	No	R432000654
⁴ Lubricator	1/2"	282 SCFM	7-232 PSI	Fill Port G 1/8	No	R432002002



Unit/Block Accessories AS2/AS3

Description	Ports NPTF	Nominal Flow qn (SCFM)	Part Number
Lockable Shut-off Valve	1/4"	106 SCFM	R432002358
Lockable Shut-off Valve	3/8"	106 SCFM	R432002359
Lockable Shut-off Valve	1/2"	1596 SCFM	R432002176
Distribution Block	1/4"	See AS2 Catalog	R432000658
Distribution Block	3/8"	See AS2 Catalog	R432000659
Distribution Block	1/2"	See AS3 Catalog	R432002004



Most common mounting method

Mounting Accessories AS2/AS3

Description	Ports NPTF		Part Number
Universal Mounting Plate		Adapts to all AS2 units	R412006368
Panel Nut		Fits regulators for panel mounting	R412006372
Flange Kit	3/8"	End Flange Kit for 1/4" & 3/8" units	R432000730
Flange Kit	1/2"	End Flange Kits for 1/2" units	R432002018
Mounting Strap		Adds mounting option between units	R412007370

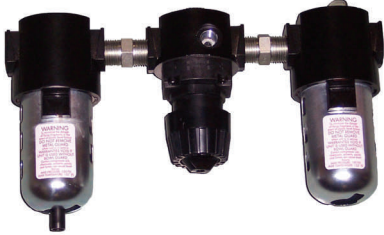


Replacement Part AS2/AS3

Description	Ports		Part Number
Gauge 0-145 PSI	G 1/4	AS2/AS3 Regulator gauge ports are G 1/4	R412004417
Polycarbonate Bowl		Semi-automatic drain	R412006338
Polycarbonate Bowl		Fully automatic drain	R412063340



Heavy Duty FRL Combinations



R432008241 Gauge 0-160 psi



Heavy Duty Filter 1/4" 1/2" 3/4" & 1"						
Description (Poly Bowl w/ Metal)	Ports NPTF	Nominal Flow qn (SCFM)	Supply PSI (Poly Bowl)	Bowl Capacity	Model Number	Part Number
Filter	1/4"	35 SCFM	150 PSI	5 oz	PF-007900-00010	R432016077
Filter	1/2"	50 SCFM	150 PSI	5oz	PF-007910-00010	R432016087
Filter	3/4"	266 SCFM	150 PSI	1 qt	PF-007503-23605	R432016040
Filter	1"	331 SCFM	150 PSI	1 qt	PF-007503-23606	R432016041



Heavy Duty Regulator 1/4" 1/2" 3/4" & 1"					
Description	Ports NPTF	Nominal Flow qn (SCFM)	PSI	Model Number	Part Number
Regulator	1/4"	55 SCFM	5-125 PSI	PR-007900-00010	R432016375
Regulator	1/2"	75 SCFM	5-125 PSI	PR-007902-00010	R432016379
Regulator	3/4"	450 SCFM	10-125 PSI	PR-007565-21005	R432016343
Regulator	1"	500 SCFM	10-125 PSI	PR-007565-21006	R432016344

Gauge sold separately: R432008241



Heavy Duty Lubricator 1/4" 1/2" 3/4" & 1"						
Description (Poly Bowl & Metal)	Ports NPTF	Nominal Flow qn (SCFM)	PSI	Bowl Capacity	Model Number	Part Number
Lubricator	1/4"	28 SCFM	150 PSI	5 oz	PG-007900-00000	R432016158
Lubricator	1/2"	52 SCFM	150 PSI	5 oz	PG-007904-00000	R432016162
Lubricator	3/4"	170 SCFM	150 PSI	23 oz	PG-007603-25405	R432016138
Lubricator	1"	340 SCFM	150 PSI	23 oz	PG-007603-25406	R432016139



HYDRAULIC
CONTROLS
INC.

San Diego (619) 691-0215

Tulare (559) 688-2911

Yuba City (530) 674-0900

Stockton (209) 466-1531

Walnut (909) 869-7600

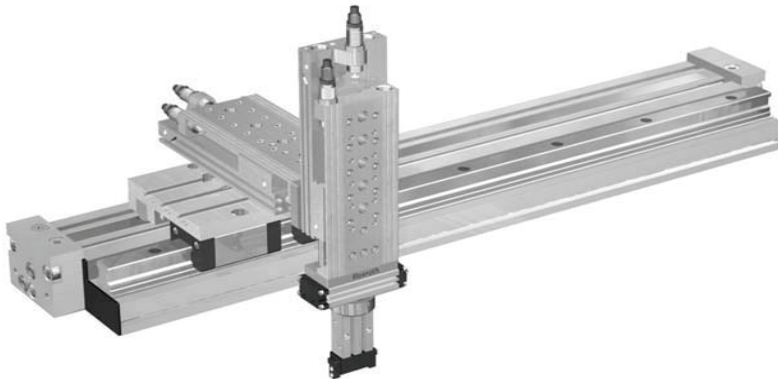
BOSCH AUTOMATION PRODUCTS



Bosch CL03, Clean Line Valve.
Food Processing Valve, Washdown



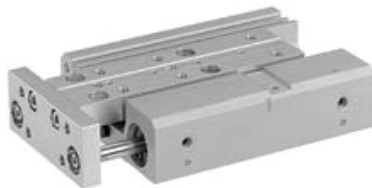
RTC Rodless Cylinder w/ Tool Plate



Easy to Combine
Automation



Mini FRL NL Series



ZSC Mini Slide For
Vertical Applications



BOSCH Feedback Cylinder



Valve Quick Reference Guide

C_v is generally used to compare flows of valves. The higher the C_v the greater the flow.

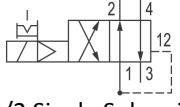
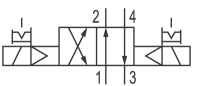
Port or Tube Nut Size	1/4" Tube Nut	3/8" Tube Nut	1/8" NPT	1/4" NPT	ISO 1	ISO II, III & IV	Hopper Valve	1/4" NPT	1/4" NPT
C_v Rating	$C_v = .20$	$C_v = 1.3$	$C_v = 0.8$	$C_v = 1.5$	$C_v = 1.1$	2.4-7.5	$C_v = 1.0$	$C_v = 0.89$	$C_v = 0.89$
Solenoid Or Manual	Solenoid	Solenoid	Solenoid	Solenoid	Solenoid	Solenoid	Solenoid / Manual	Push/Pull	Lever
Bosch Valve Series	<u>840</u>	<u>740</u> Tube Nut & Sectional	<u>TC08</u>	<u>TC15</u> Body & Sectional	<u>Ceram</u> Manifold	<u>Ceram</u> Manifold	Task Master	Clippard MMV	Clippard MMV
Page #	P. 7	P. 8	P. 9	P. 9-10	P. 11	BR Catalog	P. 14	P. 13	P. 13

Tech Tip

1 $C_v = 33$ SCFM
SCFM is Standard Cubic Feet per Min. (Standard Air: Compressor inlet air at 68° F at sea level at 33% relative humidity)



840 Integrated Tube Directional Valve

Flow Path	Tube Nut Size	Voltage	C_v Rating	Pilot Supply	Min/Max Working PSI	Manual Override	Model Description	Part Number
 4/2 Single Solenoid	1/4"	12 VDC	$C_v = .20$	Internal	20...150	✓	P-026641-00004	R432008662
	1/4"	24 VDC	$C_v = .20$	Internal	20...150	✓	P-026641-00005	5728409980
	1/4"	110 AC	$C_v = .20$	Internal	20...150	✓	P-026641-00001	5728409990
 4/2 Double Solenoid	1/4"	24 VDC	$C_v = .20$	Internal	20...150	✓	P-026642-00005	R432008666
	1/4"	110 AC	$C_v = .20$	Internal	20...150	✓	P-026642-00001	R432008664
	*Derate to 122 PSI above 105° F							

840 Tube / Port Accessories

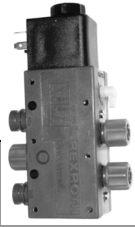
Description	Model Number	Bag Qty	Part Number
1/4" Tube Nut	P-069594-K0000	2 ea.	R432015689
Exhaust Muffler Kit	H-532400-02000	1 ea.	5324002000
Blanking Cap (Covert 4-Way to 3-Way)	H-893071-05002	1 ea.	8930715002



840 Coils & Electrical Connector

Description	Part Number
12 VDC Coil	R432006491
24 VDC Coil	5420930220
110 VAC Coil	R432006493
Electrical DIN Connector Micro C	8941012202





**Bosch 740 Series Valves
With Integrated Tube Nuts**



740 Integrated Tube Directional Valve

Flow Path	Tube Nut Size	Voltage	C _v Rating	Pilot Supply	Min/Max Working PSI	Manual Override & Flow	Model Description	Part Number
 5/2 Single Solenoid	3/8"	24 VDC	C _v =1.3	Internal	20...150	✓	PW-067697-00005	5727490220
	3/8"	110 AC	C _v =1.3	Internal	20...150	✓	PW-067697-00001	5727495270
*See TC08 & TC15 for similar type valves								

Manifold Segments for 740 series valves

Type	Port Size (NPT)	Model Number	Part Number
Inlet Section	1/2"	P-067701-00000	R432013811
End Section	1/2"	P-667702-00000	R432013812
Station Segments	None	P-067703-00000	R432013813
*Valve assemblies require one station segment per valve section			



740 Tube / Port Accessories

Description	Model Number	Bag Qty	Part Number
3/8" Tube Nut	P-068155-K0000	3 ea.	R432015287
5/16" /8mm Tube Nut	P-068156-K0000	3 ea.	R432015289
Elbow Fitting 3/8" & 5/16" Tube	P-068392-00000	1 ea.	R432015301
Exhaust Muffler Kit	P-067794-K0000	1 ea.	R432013850
Blanking Cap (Covert 4-Way to 3-Way)	H-891990-05502	1 ea.	8919905502



740 Coils & Electrical Connectors

Description	Part Number
12 VDC Coil	R432011988
24 VDC Coil	R432011989
110 AC Coil	R432011985
Form A Electrical Connector	
DIN Connector (DIN43650)	8941000302

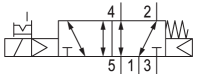
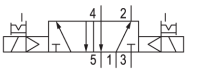




**Bosch TC08
1/8" Body Ported Valve**



TC08 Body Ported Directional Valve w/ Manual Override (Micro C Connector)

Flow Path	Body Port Size NPT	Voltage	C _v Rating	Pilot Supply	Min/Max Working PSI	Manual Override	Model Description	Part Number
 5/2 Single Solenoid	1/8"	12 VDC	C _v =0.8	Internal	44...145	✓	TC08-5/2 SR-N018-012DC-IP	R422101208
	1/8"	24 VDC	C _v =0.8	Internal	44...145	✓	TC08-5/2 SR-N018-024DC-IP	R422101209
	1/8"	110 AC	C _v =0.8	Internal	44...145	✓	TC08-5/2 SR-N018-110AC-IP	R422101210
 5/2 Double Solenoid	1/8"	12 VDC	C _v =0.8	Internal	29...145	✓	TC08-5/2 DS-N018-012DC-IP	R422101216
	1/8"	24 VDC	C _v =0.8	Internal	29...145	✓	TC08-5/2 DS-N018-024DC-IP	R422101217
	1/8"	110 AC	C _v =0.8	Internal	29...145	✓	TC08-5/2 DS-N018-110AC-IP	R422101218



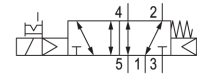
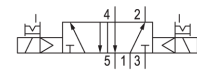
Form C Micro Connector (ISO 15217) 8941012202



**Bosch TC15
1/4" Body Ported Valve**



TC15 Body Ported Directional Valve w/ Manual Override (Form C Connector)

Flow Path	Body Port Size NPT	Voltage	C _v Rating	Pilot Supply	Min/Max Working PSI	Manual Override	Model Description	Part Number
 5/2 Single Solenoid	1/4"	12 VDC	C _v =1.5	Internal	36...145	✓	TC15-5/2 SR-N014-012DC-IP	R422101256
	1/4"	24 VDC	C _v =1.5	Internal	36...145	✓	TC15-5/2 SR-N014-024DC-IP	R422101257
	1/4"	110 AC	C _v =1.5	Internal	36...145	✓	TC15-5/2 SR-N014-110AC-IP	R422101258
 5/2 Double Solenoid	1/4"	12 VDC	C _v =1.5	Internal	44...145	✓	TC15-5/2 DS-N014-012DC-IP	Factory Stock
	1/4"	24 VDC	C _v =1.5	Internal	44...145	✓	TC15-5/2 DS-N014-024DC-IP	R422101265
	1/4"	110 AC	C _v =1.5	Internal	44...145	✓	TC15-5/2 DS-N014-110AC-IP	R422101266

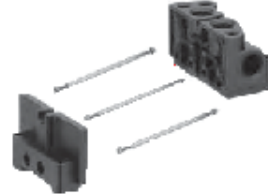


Bosch TC15 Sectional Valves



End Plate Accessories

Model Description	Pilot Supply	Part Number
End Plate Kit-IP (NPT)	Internal	R422101300
End Plate Kit-XP (NPT)	External	R422101301
TC15-NPT Add Supply Plate, 1 open, 3 & 5 Closed (multiple common supply ports)		R422101303
TC15-NPT Add Supply Section, 1/3/5 Closed (separate pressure zones)		R422101302



Tie Rod Bolt

Model Description	Part Number
*1 Station Tie Rod Bolt	1823503999
*2 Station Tie Rod Bolt	1823053258
*3 Station Tie Rod Bolt	1823053259
*4 Station Tie Rod Bolt	1823053260
*5 Station Tie Rod Bolt	1823053261
*6 Station Tie Rod Bolt	1823053262
*Requires 3 Bolts per assembly	

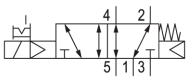
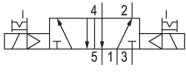


Bosch Non-Lighted "C" Connector

Description	Voltage	Part Number
Universal Voltage (No Cable)	12, 24, 120	8941012202

TC15 Sectional Valve

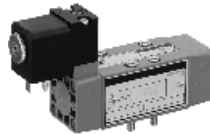


Flow Path	Section Type	Voltage	C _v Rating	Pilot Supply	Min/Max Working PSI	Manual Override	Sectional Valve Model Description	Part Number
 5/2 Single Solenoid	Section	24 VDC	C _v =1.5	External	36...145	✓	TC15-5/2 SR-N014-024DC-MVS	R422101181
	Section	110 AC	C _v =1.5	External	36...145	✓	TC15-5/2 SR-N014-110AC-MVS	R422101182
 5/2 Double Solenoid	Section	24 VDC	C _v =1.5	External	36...145	✓	TC15-5/2 DS-N014-024DC-MVS	R422101185
	Section	110 AC	C _v =1.5	External	36...145	✓	TC15-5/2 DS-N014-110AC-MVS	R422101186

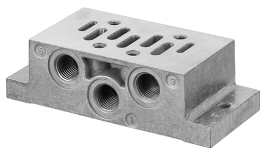


Tech Tip
Improper tube selection restricts flow. Tube I.D. should match port size. For example, 1/4" NPT valve uses 3/8" **O.D.** tubing.

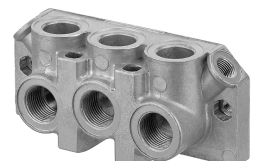
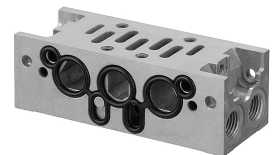
Ceram ISO Valve Family				
ISO Size	Port Size NPT	C _v Rating	SCFM	Data
I	1/4", 3/8"	1.1	40	See Below
II	3/8", 1/2"	2.4	86	BR Catalog
III	1/2", 3/4"	4.3	155	BR Catalog
IV	1"	7.5	269	BR Catalog



Bosch ISO I Ceram Valve						
Flow Path	Voltage	C _v Rating	Pilot Supply	Min/Max Working PSI	Old Model Description	Part Number
<p>5/2 Single Solenoid</p>	12 VDC	C _v =1.1	Internal	29...150	GT-010061-03640	R432006439
	24 VDC	C _v =1.1	Internal	29...150	GT-010061-03940	R432006441
	120 AC	C _v =1.1	Internal	29...150	GT-010061-02440	R432006435
	Valves supplied with bolts for mounting to single sub base or manifold segment					



ISO I Sub Base			
Description	Port Size NPT	Model Description	Part Number
Sub Base (Side Ported)	1/4"	P-069191-00001	R432015524
Sub Base (Side Ported)	3/8"	P-068975-00001	R432015488
Manifold End Plate Kit (Bolts Included)	3/8"	P-068425-00001	R432015316
Station Segment	1/4"	P-068424-00001	R432015314





Schmalz Vacuum Products



Jumbo Lifters



Vacuum Generators

Ejectors

Blowers

Pumps...



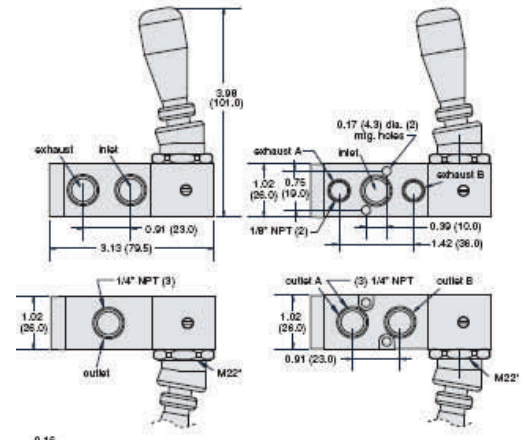
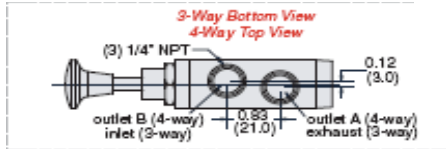
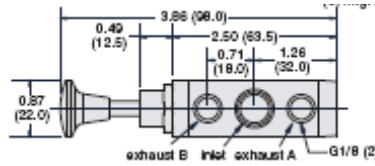
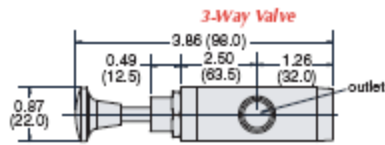
Vacuum Cups





Clippard Push/Pull Directional Valves

Flow Path	Body Port Size NPT	C _v Rating	Min/Max Working PSI	Model Description	Part Number
 Push / Pull	1/4" (1/8" Exhaust)	C _v = 0.89	0...115	3 Way /2 Position / 3 Port Push Pull Detented	MMV-P3QD
 Push / Pull	1/4" (1/8" Exhaust)	C _v = 0.89	0...115	4-Way /2 Position / 5 Port Push Pull Detented	MMV-P4QD
	1/4" (1/8" Exhaust)	C _v = 0.89	0...115	4-Way /2 Position / 5 Port Momentary Push Pull	MMV-P4QM



Clippard Lever Direction Valves

Flow Path	Body Port Size NPT	C _v Rating	Min/Max Working PSI	Model Description	Part Number
 Lever 3/2	1/4" (1/8" Exhaust)	C _v = 0.89	0...150	3 Way /2 Position / 3 Port Lever Detented	MMV-L3QD
	1/4" (1/8" Exhaust)	C _v = 0.89	0...150	3 Way /2 Position / 3 Port Lever Momentary	MMV-L3QM
 Lever 5/2	1/4" (1/8" Exhaust)	C _v = 0.89	0...150	4 Way /2 Position / 5 Port Lever Detented	MMV-L4QD
	1/4" (1/8" Exhaust)	C _v = 0.89	0...150	4 Way /2 Position / 5 Port Lever Momentary	MMV-L4QM
Lever 5/3	1/4" (1/8" Exhaust)	C _v = 0.89	0...150	4 Way /3 Position / Closed Center Lever Momentary	MMV-L4QM-C

Clippard products not available through Denver branch



Hopper Dump Valve



Hopper Dump Valve			
Size	C _v Rating	Model Description	Part Number
3/8" NPT	C _v =1.0	P-060681-00001	R431005556

Common Repair Parts		
Description	Model Description	Part Number
Buna Seal Kit	P-060102-00000	R431005395
12 VDC Solenoid	P-050861-00004	R431002783

Quick Exhaust Valves			
Size	Material	Model Description	Part Number
1/4" NPT	Aluminum	P-052935-00002	R431003038
3/8" NPT	Aluminum	P-052935-00003	R431003039
1/2" NPT	Aluminum	P-052925-00004	R431003040



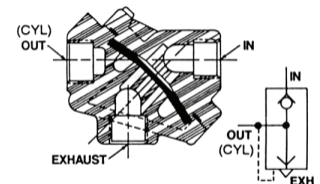
Ports can be inline or adjacent by rotating cover.

Quick Exhaust valves speed the release of air in cylinders, clutches or other pneumatic devices.

Non- Exhaust: Air pressure entering the inlet port forces the diaphragm against the exhaust port, closing it. Air then flows around the diaphragm to the outlet port.

Exhausting: When air pressure at the inlet port is reduced, a differential in the pressure acting on the diaphragm is created. This differential in pressure lifts the diaphragm from the exhaust port and seats it on the inlet port. This opens the exhaust port, allowing air to flow freely from the outlet port to atmosphere, while closing the inlet port.

Note: Should outlet air pressure drop below inlet pressure, the differential in pressure seats the diaphragm on the exhaust port, stopping further exhaust.





**Compact
Tube x Male Thread**



Tube Size	Thread Size	BRP (White)	SPC (Black)
*1/8	10-32	R432000322	PC 1/8-U10UC
*1/8	1/8	R432000321	PC 1/8-N01UC
*5/32	10-32	R432000332	PC 5/32-U10UC
*5/32	1/8	R432000330	PC 5/32-N01UC
*1/4	1/8	R432000313	PC 1/4-N01UC
*Compact type fitting			

**Compact
Tube x Male Thread Elbow**



Tube Size	Thread Size	BRP (White)	SPC (Black)
*1/8	10-32	R432000358	PL 1/8-U10UC
*1/8	1/8	R432000357	PL 1/8-N01UC
*5/32	10-32	R432000360	PL 5/32-N10UC
*5/32	1/8	R432000359	PL 5/32-N01UC
*1/4	1/8	R432000355	PL 1/4-N01UC
*Compact type fitting			

**Standard
Tube x Male Thread**



FITTINGS AVAILABLE IN
BOSCH REXROTH
(WHITE) OR
SPC (BLACK)

**Standard
Tube x Male Thread Elbow**



Tube Size	Thread Size	BRP (White)	SPC (Black)
5/32	10-32	R432000139	PC 5/32-U10U
5/32	1/4	R432000140	PC 5/32-N02U
5/32	1/8	R432000141	PC 5/32-N01U
5/16	1/4	R432000136	PC 5/16-N02U
5/16	3/8	R432000138	PC 5/16-N03U
1/4	1/8	R432000128	PC 1/4-N01U
1/4	1/4	R432000127	PC 1/4-N02U
1/4	3/8	R432000129	PC 1/4-N03U
3/8	1/4	R432000133	PC 3/8-N02U
3/8	3/8	R432000134	PC 3/8-N03U
3/8	1/2	R432000132	PC 3/8-N04U
1/2	1/4	R432000124	PC 1/2-N02U
1/2	3/8	R432000125	PC 1/2-N03U
1/2	1/2	R432000123	PC 1/2-N04U

Tube Size	Thread Size	BRP (White)	SPC (Black)
5/32	10-32	R432000243	PL 5/32-U10U
5/32	1/8	R432000245	PL 5/32-N01U
5/32	1/4	R432000244	PL 5/32-N02U
1/4	10-32	R432000232	PL 1/4-U10U
1/4	1/8	R432000234	PL 1/4-N01U
1/4	1/4	R432000233	PL 1/4-N02U
1/4	3/8	R432000235	PL 1/4-N03U
5/16	1/4	R432000240	PL 5/16-N02U
5/16	3/8	R432000242	PL 5/16-N03U
3/8	1/8		PL 3/8-N01U
3/8	1/4	R432000237	PL 3/8-N02U
3/8	3/8	R432000238	PL 3/8-N03U
3/8	1/2	R432000236	PL 3/8-N04U
1/2	1/4	R432000230	PL 1/2-N02U
1/2	3/8	R432000231	PL 1/2-N03U
1/2	1/2	R432000229	PL 1/2-N04U

Compact Male Branch Tee



Tube Size	Thread Size	BRP (White)	SPC (Black)
*1/8	10-32	R432000342	PT 1/8-U10UC
*1/8	1/8	R432000341	PT 1/8-N01UC
*5/32	10-32	R432000344	PT 5/32-U10UC
*5/32	1/8	R432000343	PT 5/32-N01UC
*1/4	1/8	R432000339	PT 1/4-N01UC
*Compact type fittings			

Male Run Tee



Tube Size	Thread Size	BRP (White)	SPC (Black)
5/32	1/8	R432000109	PST 5/32-N01U
5/32	1/4	R432000108	PST 5/32-N02U
1/4	1/8	R432000098	PST 1/4-N01U
1/4	1/4	R432000097	PST 1/4-N02U
3/8	1/4	R432000101	PST 3/8-N02U
3/8	3/8	R432000102	PST 3/8-N03U
1/2	3/8	R432000095	PST 1/2-N03U
1/2	1/2	R432000093	PST 1/2-N04U

Standard Male Branch Tee



**FITTINGS AVAILABLE IN
BOSCH REXROTH
(WHITE) OR
SPC (BLACK)**

Plug-In Tube Reducer



Tube Size	Thread Size	BRP (White)	SPC (Black)
5/32	10-32	R432000185	PT 5/32-U10U
5/32	1/8	R432000187	PT 5/32-N01U
5/32	1/4	R432000186	PT 5/32-N02U
1/4	10-32	R432000174	PT 1/4-U10U
1/4	1/8	R432000176	PT 1/4-N01U
1/4	1/4	R432000175	PT 1/4-N02U
1/4	3/8	R432000177	PT 1/4-N03U
5/16	1/4	R432000182	PT 5/16-N02U
5/16	3/8	R432000184	PT 5/16-N03U
3/8	1/4	R432000179	PT 3/8-N02U
3/8	3/8	R432000180	PT 3/8-N03U
3/8	1/2	R432000178	PT 3/8-N04U
1/2	1/4	R432000172	PT 1/2-N02U
1/2	3/8	R432000173	PT 1/2-N03U
1/2	1/2	R432000171	PT 1/2-N04U

Tube Size	Tube Size	BRP (White)	SPC (Black)
1/4	5/32	R432000066	PGJ 1/4-5/32
5/16	1/4	R432000069	PGJ 5/16-1/4
3/8	1/4	R432000067	PGJ 3/8-1/4
3/8	5/16	R432000068	PGJ 3/8-5/16
1/2	3/8	R432000064	PGJ 1/2-3/8



Straight Union



Tube Size	Tube Size	BRP (White)	SPC (Black)
*5/32	5/32		PUC 5/32C
5/32	5/32	R432000154	PUC 5/32
*1/4	1/4		PUC 1/4C
1/4	1/4	R432000151	PUC 1/4
5/16	5/16	R432000153	PUC 5/16
3/8	3/8	R432000152	PUC 3/8
1/2	1/2	R432000150	PUC 1/2

*Compact type fitting

Tube Tee



Tube Size	Tube Size	BRP (White)	SPC (Black)
*5/32	5/32		PUT 5/32C
5/32	5/32	R432000170	PUT 5/32
*1/4	1/4		PUT 1/4C
1/4	1/4	R432000167	PUT 1/4
5/16	5/16	R432000169	PUT 5/16
3/8	3/8	R432000168	PUT 3/8
1/2	1/2	R432000166	PUT 1/2

*Compact type fitting

Bulkhead Union



**FITTINGS AVAILABLE IN
BOSCH REXROTH
(WHITE) OR
SPC (BLACK)**

Tube Size	Tube Size	BRP (White)	SPC (Black)
5/32	5/32	R432000159	PMM 5/32
1/4	1/4	R432000156	PMM 1/4
5/16	5/16	R432000158	PMM 5/16
3/8	3/8	R432000157	PMM 3/8
1/2	1/2	R432000155	PMM 1/2

Tube Y



Tube Size	Tube Size	BRP (White)	SPC (Black)
5/32	5/32	R432000270	PY 5/32
1/4	1/4	R432000267	PY 1/4
5/16	5/16	R432000269	PY 5/16
3/8	3/8	R432000268	PY 3/8
1/2	1/2	R432000266	PY 1/2



Tube Cross



Tube Size	Tube Size	BRP (White)	SPC (Black)
5/32	5/32	R432000260	PZA 5/32
1/4	1/4	R432000257	PZA 1/4
5/16	5/16	R432000259	PZA 5/16
3/8	3/8	R432000258	PZA 3/8
1/2	1/2	R432000256	PZA 1/2

Flow Controls



Tube Size	Thread Size	BRP (White)	SPC (Black)
5/32	1/8	R432002364	NSE 5/32-N01C
1/4	1/8	R432002366	NSE 1/4-N01C
1/4	1/4	R432002371	NSE 1/4-N02U
5/16	3/8	R432002375	NSE 5/16-N03U
3/8	3/8	R432002378	NSE 3/8-N03U
3/8	1/2	R432002379	NSE 3/8-N04U
1/2	3/8	R432002380	NSE 1/2-N03U
1/2	1/2	R432002381	NSE 1/2-N04U

Other Tube Fittings

MANIFOLD



90° FEMALE ELBOW



Tube Fitting Kits



45° STREET ELBOW



TUBE FLOW CONTROL



BLANKING PLUG





Coilhose Assemblies (170 PSI @ 75° F)				
Hose I.D.	Color	Length	Hose Ends	Part Number
1/4"	Yellow	12'	1/4" Swivel Both Ends	N14-12B
1/4"	Yellow	17'	1/4" Swivel Both Ends	N14-17B
1/4"	Yellow	25'	1/4" Swivel Both Ends	N14-25B



1/4" Blow Gun w/ High Flow Tip
Part # TYP-2500CS



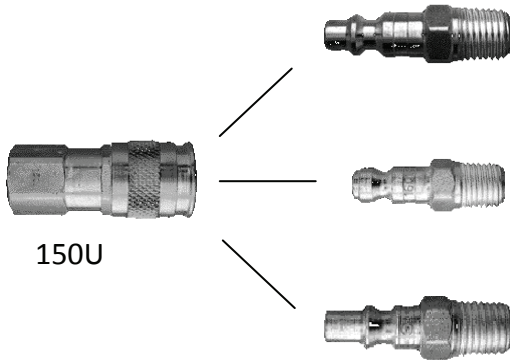
1/4" Rubber Tip Blow Gun
Part # 601

Tech Tip
Air Tool Lubricant is specifically formulated for use in air-line lubricators.



ISO 46 Coilhose Air Tool Lubricant		
Volume	Case Qty	Part Number
1 Quart	6 Bottles	ATL032
1 Gallon	4 Bottles	ATL128

Coilhose Universal Couplers



Industrial Interchange (Type 15)

Automotive Interchange (Type 16)








ARO Interchange (Type 14)

Description	Male Pipe Size	Female Pipe Size	Part Number
Coupler		1/4" NPT	150U
Coupler	1/4" NPT		152U
Industrial Tip (Type 15)	1/4" NPT		1501
Industrial Tip (Type 15)		1/4" NPT	1502
Automotive Tip (Type 16)	1/4" NPT		1601
Automotive Tip (Type 16)		1/4" NPT	1602
ARO (Type 14)	1/4" NPT		1401



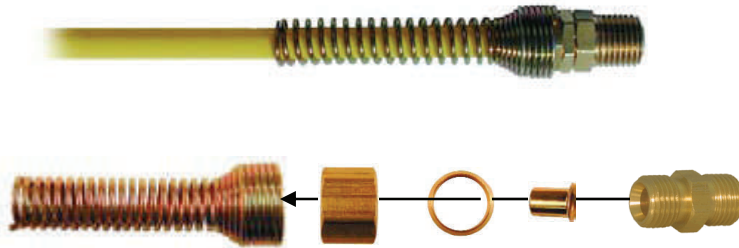
Coilhose Nylon Hose & Fittings

(170 PSI @ 75° F)

	Hose I.D.	Tube O.D.	Description	Part Number
	1/2"	.620"	Yellow Bulk Hose	N12-100
Other sizes and lengths also available				
	Hose I.D.	Size	Description	Part Number
	1/2"		Spring Guard	CSG08
	1/2"	1/2" NPT	Male Swivel (Nut, Ferrule & Insert Included)	CSM0808
	1/2"		Tube Union	CU08
	1/2"		Replacement Nut	CN08
	1/2"		Replacement Ferrule	CPF08
	1/2"		Replacement Tube Insert	CTI08



1/2" Yellow Coilhose










Assembly Instructions

Slide spring guard, nut and ferrule over tube. Install tube insert. Seat tube with insert into the bottom of fitting. Tighten nut.

Coilhose Stowaway Nylon Hose & Fittings

(220 PSI @ 75° F)

	Hose I.D.	Tube O.D.	Description	Part Number
	1/4"	.309"	Blue Bulk Hose	S14-100
Other sizes and lengths also available				
	Hose I.D.	Size	Description	Part Number
	1/4"		Spring Guard	CSG04
	1/4"	1/4" NPT	Male Swivel (Nut, Ferrule & Insert Included)	SSM0404
	1/4"		Tube Union	SU04
	1/4"		Replacement Nut	CN04
	1/4"		Replacement Ferrule	CPF04
	1/4"		Replacement Tube Insert	STI04



1/4" Blue Stowaway Hose



Polyethylene Tubing (Common Sizes & Colors)						
Tube O.D.	Tube I.D.	Wall Thickness	PSI @ 75° F	Package Length	Color	Part Number
5/32"	.106"	.031	166 PSI	100	Natural	PE2510-100N
5/32"	.106"	.031	166 PSI	100	Black	PE2510-100K
1/4"	.170"	.040"	173 PSI	100	Natural	PE0417-100N
1/4"	.170"	.040"	173 PSI	100	Black	PE0417-100K
5/16"	.236"	.038"	125 PSI	100	Natural	PE3103-100N
5/16"	.236"	.038"	125 PSI	100	Black	PE3103-100K
3/8"	.250"	.062	192 PSI	100	Natural	PE064-100N
3/8"	.250"	.062	192 PSI	100	Black	PE064-100K
1/2"	.375"	.062"	123 PSI	100	Natural	PE086-100N
1/2"	.375"	.062"	123 PSI	100	Black	PE086-100K

Tech Tip
 Tube I.D. should match port size.
 For example, 1/4" NPT valve uses .250" I.D. (3/8" O.D.)



Tube Cutter: PXC058

Colors available: Natural: **N** Black: **K** Blue: **B** Red: **R** Green: **G** Yellow: **Y**



Tech Tip
 Nylon Tubing better suited for outdoor, wider temperature ranges and higher pressure applications. (See Coilhose catalog for details)

Nylon Tubing						
Tube O.D.	Tube I.D.	Wall Thickness	PSI @ 75° F	Package Length	Color	Part Number
5/32"	.106"	.025"	225 PSI	100	Black	NC2525-100K
1/4"	.170"	.040"	265 PSI	100	Black	NC0440-100K
3/8"	.275"	.050"	220 PSI	100	Black	NC0650-100K
1/2"	.375"	.062"	200 PSI	100	Black	NC0862-100K
Other colors and lengths also available.						



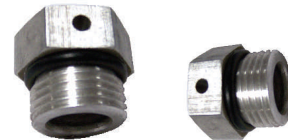
<u>Speed Control Mufflers</u>	
Size	Part Number
1/8" NPT	ASP-1SC
1/4" NPT	ASP-2SC
3/8" NPT	ASP-3SC
1/2" NPT	ASP-4SC
3/4" NPT	ASP-6SC
1" NPT	ASP-8SC



<u>Mufflers</u>	
Size	Part Number
10-32	ASP-M
1/8" NPT	ASP-1
1/4" NPT	ASP-2
3/8" NPT	ASP-3
1/2" NPT	ASP-4
3/4" NPT	ASP-6
1" NPT	ASP-8



<u>NPT Cylinder Breathers</u>	
Size	Part Number
1/8" NPT	ASP-1BV
1/4" NPT	ASP-2BV
3/8" NPT	ASP-3BV
1/2" NPT	ASP-4BV
3/4" NPT	ASP-6BV
1" NPT	ASP-8BV



<u>SAE Cylinder Breathers</u>	
Size	Part Number
#6 SAE	0A009431
#8 SAE	16329A
#10 SAE	16651A

www.Hydraulic-Controls.com

DENVER
10550 E. 54th Avenue, Unit D
Denver, CO 80239
(303) 295-7500

EMERYVILLE
P.O. Box 8007
4700 San Pablo Avenue
Emeryville, CA 94608
(510) 658-8300

FRESNO
2537 E. Jensen Avenue
Fresno, CA 93706
(559) 268-4291

REDDING
845 Industrial Street
Redding, CA 96002
(530) 221-6500

SAN DIEGO
402 West 35th Street, Unit C
National City, CA 91950
(619) 691-0215

STOCKTON
2136 Stagecoach Road
Stockton, CA 95215
(209) 466-1531

TULARE
2450 South "K" Street
Tulare, CA 93274
(559) 688-2911

WALNUT
610 Reyes Drive
Walnut, CA 91789
(909) 869-7600

YUBA CITY
3481 Industrial Drive
Yuba City, CA 95993
(530) 674-0900



**HYDRAULIC
CONTROLS**
INC.